

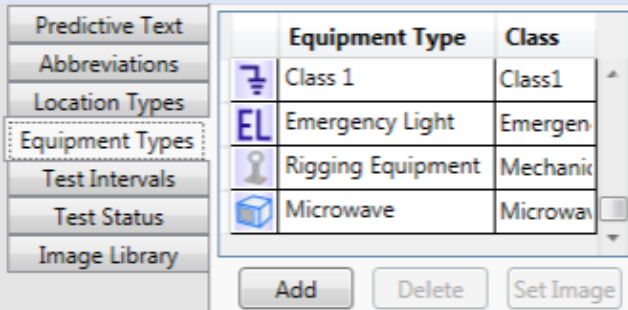
## FASTtag Appliance Testing Software

**FASTtag Professional Edition** has been designed for the Test and Tag Professional, or advanced user, with many powerful productivity features.

- Easy to use
- Customise to suit your business
- Extendable and flexible
- High performance for large sites
- Design your own tag layout
- Setup reports as required
- Multiple users and computers

### Flexible

With **FASTtag**, you can record test information the way you work. Add new types of equipment, test outcomes and re-test intervals – ideal for testing Microwaves, Emergency lights, even non-electrical equipment. For quick visual recognition, you can add your own icons for Equipment types and Location Types.



You can create your own list of Abbreviations and have full control over Predictive Text. The multiple Paste facility allows selection of one or more Items that can be replicated multiple times – imagine how much time that will save!

### Print Custom Tags

Design your printed tags to be distinctive and functional with the intuitive Tag Designer. Include special fields using any Windows fonts, along with additional text and graphic objects. You immediately see the design results with the graphical layout and preview tools.



### Design Reports

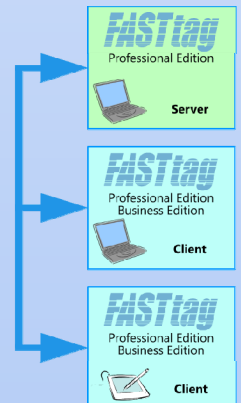
**FASTtag** Professional Edition includes a powerful Report Designer, so you can easily produce professional looking reports, formatted exactly to your customer's requirements.

### Automatically Generate Invoices

To reduce your time spent on paperwork, **FASTtag** counts up the number of tests performed on each type of Equipment, then produces the invoice using your pre-defined price for each test.

### SmartSync Data Sharing

Have multiple users adding appliances and recording tests, and **SmartSync** will take care of keeping all copies of your data up to date, over your network.



*The next generation in  
test and tag software*



## Professional Edition Features

All Business Edition features are included

- Companies and Locations
- Complete Test History
- Predictive Text
- Barcode Scanning
- Cut / Copy / Paste
- Tag Printer Option
- Tester Interface Option
- Reminders
- Multiple Appliance Testers
- Multiple Users
- Email Integration
- Unique Item Identifiers
- Asset Management
- Import Wizard

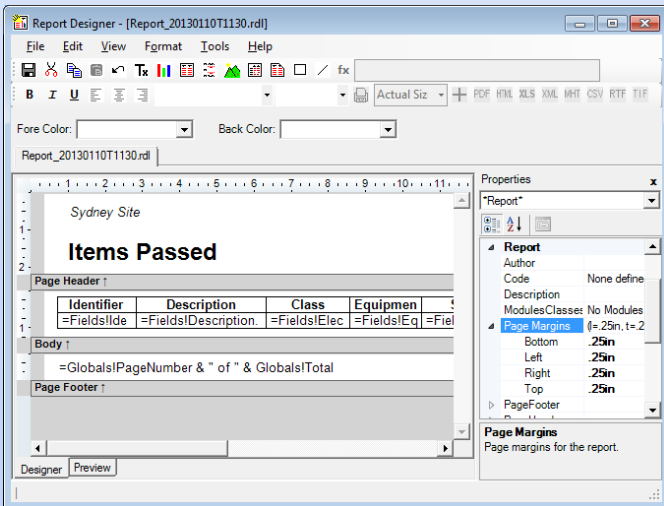
In addition, Professional Edition provides a host of additional features designed for Test and Tag specialists and advanced users.

**Abbreviations** – Create and edit your own abbreviations to speed up description entry.

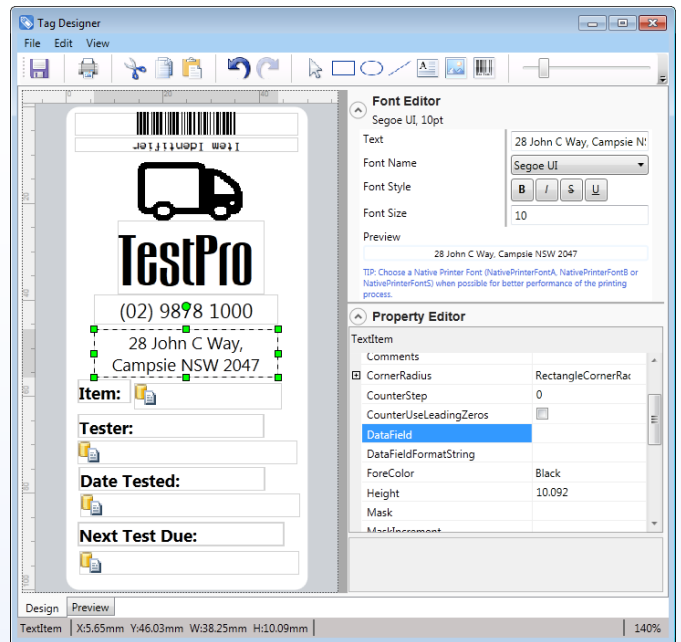
**Custom Equipment Types** – Create and edit Equipment Types to categorise your tests. You can include an icon for each Type.

**Custom System Settings** – Design your own Location Types, Test Intervals and Test Results.

**Report Designer** – Add Custom Reports with full control over field layout, column headings and fonts. Allows you to meet customer specific requirements.



**Tag Designer\*** – Visually design and preview your test tags, setting fields to include, fonts, lines and other graphics. You can even assign specific tags to



be used for your custom Test Results.

\* Requires Printer Option

**Price List** – Keep a record of the price per test, mapped to each Equipment Type.

**Automated Invoicing** – Quickly create invoices for work performed, based on the number of tests performed and the test price for each type of Equipment. You can also add invoice line items at the time of doing the test.

**SmartSync Data Sharing** – Full capabilities when disconnected, and complete synchronisation when reconnected to your network.

**Export Wizard** – Export to Excel or Transfer File.

**Supported Platforms** – **FASTtag** is available on all current Microsoft Windows desktop operating systems:

Windows XP SP3 or later (32-bit)

Windows Vista, Windows 7, Windows 8

### System Requirements

Windows PC with Pentium processor (or equivalent) 200MHz or better

At least 1GB RAM, 500MB hard disk free

**FREE trial software download**  
[www.aus.com.au/fasttag/fasttag\\_download](http://www.aus.com.au/fasttag/fasttag_download)  
**OR call today to request a demo**

Available from:

**Advanced User Systems Pty Ltd**



2 Rudd Street North Ryde NSW 2113, Australia  
Phone: 02 9878 4777, Fax: 02 9878 6951

[www.fasttag.com.au](http://www.fasttag.com.au)